

# ALABAMA Labor Market Information News

MAY 2026 Publication



ISSUE 4 APRIL 2026 DATA

## Table of Contents

Economic Brief	1
LMI Definitions	2
Consumer Price Index	6
<b>Current Employment Statistics</b>	
Employment	3-5, 7-14
Hours and Earnings	6
<b>Local Area Unemployment Statistics</b>	15-19
<b>Release Schedule</b>	20
<b>Technical Support</b>	20

## Economic Brief

Alabama's seasonally adjusted labor force participation rate, at 57.3 percent in April 2026, was lower than 57.5 percent reported in March 2026 and lower than 57.7 percent recorded in April 2025. The civilian labor force was 2,378,402 in April, compared to 2,384,074 in March 2026 and 2,377,299 a year ago.

	Not Seasonally Adjusted			Seasonally Adjusted		
	Apr p 2026	Mar r 2026	Apr r 2025	Apr p 2026	Mar r 2026	Apr r 2025
Civilian Labor Force <sup>1</sup>	2,362,611	2,377,069	2,382,783	2,378,402	2,384,074	2,377,299
Employment	2,302,213	2,309,594	2,324,771	2,311,287	2,318,607	2,307,708
Unemployment	60,398	67,475	58,012	67,115	65,467	69,591
AL Unemployment Rate	2.6	2.8	2.4	2.8	2.7	2.9
AL Labor Force Participation Rate	56.9	57.3	57.8	57.3	57.5	57.7
U.S. Unemployment Rate	4.0	4.3	3.9	4.3	4.3	4.2
U.S. Labor Force Participation Rate	61.7	61.9	62.5	61.8	61.9	62.6
Wage and Salary Employment <sup>2</sup>	2,211,300	2,198,500	2,198,100	2,209,900	2,205,100	2,196,500

<sup>1</sup> Place of residence basis. <sup>2</sup> Place of work basis. <sup>3</sup> Preliminary. <sup>4</sup> Revised.

Estimates prepared by the Alabama Department of Workforce in cooperation with the Bureau of Labor Statistics, based on a 2025 benchmark.

The similar national labor force participation rate for April 2026, at 61.8 percent, was lower than the 61.9 percent reported the prior month and lower than 62.6 from a year ago.

The State's seasonally adjusted unemployment rate, at 2.8 percent in April, was higher than 2.7 percent recorded the prior month and lower than 2.9 percent reported a year ago. April's rate represented 67,115 unemployed persons, compared to 65,467 in March 2026 and 69,591 in April 2025.

The comparable national unemployment rate for April, at 4.3 percent, was unchanged compared to 4.3 percent in the prior month and higher compared to the year ago rate of 4.2 percent.

Alabama's not seasonally adjusted wage and salary employment, totaling 2,211,300 in April, increased by 12,800 jobs over the month. Employment gains occurred in leisure and hospitality (+4,800); professional and business services (+2,500); trade, transportation, and utilities (+1,700); other services (+1,400); construction (+1,000); government (+500); manufacturing (+300); financial activities (+300); mining and logging (+200); and private education and health services (+100). The employment was unchanged in information.

Over the past twelve months, total nonagricultural wage and salary employment increased by 13,200 jobs. Annual gains were in government (+4,700), private education and health services (+4,100), leisure and hospitality (+3,400), construction (+3,200), professional and business services (+2,700), other services (+2,000), and mining and logging (+300). Annual losses were in trade, transportation, and utilities (-3,100); manufacturing (-2,000); financial activities (-1,100); and information (-1,000).



## LMI Definitions

**American Community Survey (ACS):** The ACS is an ongoing survey that provides data every year by giving communities the current information they need to plan investments and services. Information from the survey generates data that help determine how more than \$400 billion in federal and state funds are distributed each year.

**Bureau of Labor Statistics (BLS):** The Bureau is a division of the U.S. Department of Labor and functions as the principal data gathering agency of the federal government in the field of labor economics. The BLS collects, processes, analyzes and disseminates data relating to employment, unemployment, the labor force, productivity, prices, family expenditures, wages, industrial relations, and occupational safety and health.

**Census Tract:** A small relatively permanent statistical subdivision of a county delineated by local committees of census data users for the purpose of collecting and presenting census data. It is worth noting that census tract conform to county lines (that is they are always sub-sets of a county), but may not follow zip code lines.

**Civilian Labor Force:** The civilian labor force comprises the total of all civilians age 16 and older classified as employed or unemployed, or seeking employment. This gives employers a measure of the labor pool.

**Consumer Price Index (CPI):** A measure of the average change in prices over time for a set group of goods and services. The Bureau of Labor Statistics publishes CPIs for two population groups: (1) for all urban consumers (CPI-U) which covers approximately 80 percent of the total population and (2) for all urban wage earners and clerical workers (CPI-W) which covers 32 percent of the total population. Among the CPI components are the costs of housing, food, transportation, and energy. While the CPI is not technically a cost of living index, it is often used to indicate changes in the cost-of-living.

**Current Employment Statistics (CES) Survey:** A monthly survey of nonfarm business establishments used to collect nonfarm payroll employment, and worker hours and earnings by industry and area. Through the Federal/State cooperative effort, these data are used to compute current monthly employment, and hours and earnings estimates, by industry, for the nation, the 50 states and the District of Columbia, and over 250 Metropolitan Statistical Areas (MSA's).

**Current Population Survey (CPS):** A monthly household survey of the civilian non-institutional population of the United States. This BLS survey provides labor market statistics (e.g., employment, unemployment and wages) by industry, occupation, and demographic characteristics. The Bureau of the Census collects data for this survey in cooperation with BLS.

**CES Employment:** A count of all persons who worked full or part time or received pay from a nonagricultural employer for any part of the pay period that included the 12th day of the month. Because this count comes from a survey of employers, persons who work for two different companies could be counted twice. Therefore, non-farm payroll employment is really a count of the number of jobs rather than the number of persons employed. This count is also based on where the jobs are located, regardless of where the workers reside. Non-farm payroll employment data are collected and compiled by Current Employment Statistics (CES) Survey.

**Labor Force Participation Rate:** The labor force participation rate represents the number of people in the labor force as a percentage of the civilian noninstitutional population. In other words, the participation rate is the percentage of the population that is either working or actively looking for work. The labor force participation rate is calculated as:  $(\text{Labor Force} \div \text{Civilian Noninstitutional Population}) \times 100$ .

**Labor Market Information (LMI):** A body of knowledge that includes a variety of economic, social, and demographic information. This information describes current conditions and forecasts employment conditions at a future date. LMI is comprised of population data, labor force data, industry data, occupational data, general economic trends, and career data.

**Local Area Unemployment Statistics (LAUS):** A federal-state cooperative program, which produces monthly estimates of total employment and unemployment for approximately 7,500 areas.

**Metropolitan Area (MA):** A Core Based Statistical Area associated with at least one urbanized area that has a population of at least 50,000. The Metropolitan Statistical Area comprises the central county or counties containing the core, plus adjacent outlying counties having a high degree of social and economic integration with the central county as measured through commuting.

**North American Industrial Classification System (NAICS):** A system of identifying industry activity, NAICS is replacing the U.S. Standard Industrial Classification (SIC) system. NAICS will reshape the way we track our industries. NAICS was developed jointly by the U.S., Canada, and Mexico to provide new comparability in statistics about business activity across North America.

**Occupational Employment and Wage Statistics (OEWS):** A federal state cooperative program, that provides employment and wage estimates for about 830 occupations in over 400 industries. By surveying 1.1 million business establishments nationwide, OEWS produces estimates for approximately 530 metropolitan and nonmetropolitan areas, states, the District of Columbia, and selected U.S. territories.

**Seasonal Adjustment:** A statistical technique that eliminates the influences of weather, holidays, the opening and closing of schools, and other recurring seasonal events from economic time series. This permits easier observation and analysis of cyclical, trend, and other nonseasonal movements in the data.

**Standard Occupational Classification (SOC):** This is an occupational coding system that was presented by the Bureau of Labor Statistics (BLS) to replace and consolidate several previous coding systems used to classify occupations. The consolidated coding systems include the Occupational Employment Statistics (OES), the Dictionary of Occupational Titles (DOT), and the grouping of occupational titles used by the Census based on survey responses.

**Workforce Regions:** State specific geographical area, designated by the governor, within which employment and training services are provided under the Workforce Innovation and Opportunity Act (WIOA) in Alabama.



**EMPLOYEES IN NONAGRICULTURAL INDUSTRIES IN ALABAMA 1/**  
(in thousands)

INDUSTRY				NET CHANGE FROM:		PERCENT CHANGE FROM:	
	Apr p 2026	Mar r 2026	Apr r 2025	Mar r 2026	Apr r 2025	Mar r 2026	Apr r 2025
<b>Total Nonfarm</b>	<b>2211.3</b>	<b>2198.5</b>	<b>2198.1</b>	<b>12.8</b>	<b>13.2</b>	<b>0.58</b>	<b>0.60</b>
<b>Total Private</b>	<b>1779.6</b>	<b>1767.3</b>	<b>1771.1</b>	<b>12.3</b>	<b>8.5</b>	<b>0.70</b>	<b>0.48</b>
<b>Goods Producing</b>	<b>404.2</b>	<b>402.7</b>	<b>402.7</b>	<b>1.5</b>	<b>1.5</b>	<b>0.37</b>	<b>0.37</b>
<b>Mining and Logging</b>	<b>9.6</b>	<b>9.4</b>	<b>9.3</b>	<b>0.2</b>	<b>0.3</b>	<b>2.13</b>	<b>3.23</b>
Mining (except Oil and Gas)	4.8	4.7	4.7	0.1	0.1	2.13	2.13
<b>Construction</b>	<b>111.8</b>	<b>110.8</b>	<b>108.6</b>	<b>1.0</b>	<b>3.2</b>	<b>0.90</b>	<b>2.95</b>
Construction of Buildings	25.3	25.2	24.2	0.1	1.1	0.40	4.55
Heavy and Civil Engineering Construction	18.7	18.8	18.6	-0.1	0.1	-0.53	0.54
Specialty Trade Contractors	67.8	66.8	65.8	1.0	2.0	1.50	3.04
<b>Manufacturing</b>	<b>282.8</b>	<b>282.5</b>	<b>284.8</b>	<b>0.3</b>	<b>-2.0</b>	<b>0.11</b>	<b>-0.70</b>
<b>Durable Goods Manufacturing</b>	<b>194.0</b>	<b>193.6</b>	<b>194.2</b>	<b>0.4</b>	<b>-0.2</b>	<b>0.21</b>	<b>-0.10</b>
Wood Product Manufacturing	18.3	18.3	18.6	0.0	-0.3	0.00	-1.61
Primary Metal Manufacturing	18.5	18.4	18.4	0.1	0.1	0.54	0.54
Fabricated Metal Product Manufacturing	27.7	27.6	27.5	0.1	0.2	0.36	0.73
Machinery Manufacturing	11.1	11.1	11.0	0.0	0.1	0.00	0.91
Computer and Electronic Product Manufacturing	7.4	7.4	7.4	0.0	0.0	0.00	0.00
Elect.Equipment, Appliance & Component Manfng	6.9	6.8	6.9	0.1	0.0	1.47	0.00
Transportation Equipment Manufacturing	79.0	79.0	79.4	0.0	-0.4	0.00	-0.50
Motor Vehicle Manufacturing	22.2	22.3	22.2	-0.1	0.0	-0.45	0.00
Motor Vehicle Parts Manufacturing	29.1	29.1	29.7	0.0	-0.6	0.00	-2.02
Aerospace Products & Parts Manufacturing	15.9	15.9	15.7	0.0	0.2	0.00	1.27
Furniture and Related Product Manufacturing	8.2	8.2	8.4	0.0	-0.2	0.00	-2.38
<b>Non-Durable Goods Manufacturing</b>	<b>88.8</b>	<b>88.9</b>	<b>90.6</b>	<b>-0.1</b>	<b>-1.8</b>	<b>-0.11</b>	<b>-1.99</b>
Food Manufacturing	32.7	32.8	34.1	-0.1	-1.4	-0.30	-4.11
Animal Slaughtering and Processing	23.9	24.0	25.3	-0.1	-1.4	-0.42	-5.53
Textile Mills	3.7	3.7	3.8	0.0	-0.1	0.00	-2.63
Textile Product Mills	2.2	2.2	2.3	0.0	-0.1	0.00	-4.35
Paper Manufacturing	11.0	11.0	11.3	0.0	-0.3	0.00	-2.65
Plastics and Rubber Products Manufacturing	17.3	17.3	17.7	0.0	-0.4	0.00	-2.26
<b>Service Providing</b>	<b>1807.1</b>	<b>1795.8</b>	<b>1795.4</b>	<b>11.3</b>	<b>11.7</b>	<b>0.63</b>	<b>0.65</b>
<b>Private Service Providing</b>	<b>1375.4</b>	<b>1364.6</b>	<b>1368.4</b>	<b>10.8</b>	<b>7.0</b>	<b>0.79</b>	<b>0.51</b>
<b>Trade, Transportation, and Utilities</b>	<b>401.4</b>	<b>399.7</b>	<b>404.5</b>	<b>1.7</b>	<b>-3.1</b>	<b>0.43</b>	<b>-0.77</b>
<b>Wholesale Trade</b>	<b>77.3</b>	<b>77.7</b>	<b>79.1</b>	<b>-0.4</b>	<b>-1.8</b>	<b>-0.51</b>	<b>-2.28</b>
Merchant Wholesalers, Durable Goods	41.5	41.9	42.6	-0.4	-1.1	-0.95	-2.58
Merchant Wholesalers, Nondurable Goods	22.0	21.9	22.5	0.1	-0.5	0.46	-2.22
Wholesale Trade Agents and Brokers	13.8	13.9	14.0	-0.1	-0.2	-0.72	-1.43
<b>Retail Trade</b>	<b>240.0</b>	<b>238.2</b>	<b>237.9</b>	<b>1.8</b>	<b>2.1</b>	<b>0.76</b>	<b>0.88</b>
Motor Vehicle and Parts Dealers	33.3	33.1	33.4	0.2	-0.1	0.60	-0.30
Building Mat. & Garden Equip. and Supplies Dealers	24.6	23.9	24.0	0.7	0.6	2.93	2.50
Food and Beverage Retailers	37.9	38.3	37.9	-0.4	0.0	-1.04	0.00
General Merchandise Retailers	61.4	61.0	60.7	0.4	0.7	0.66	1.15
Department Stores	10.3	10.5	10.6	-0.2	-0.3	-1.90	-2.83
Warehouse Clubs, Supercenters, and Other General	51.1	50.5	50.1	0.6	1.0	1.19	2.00
Health and Personal Care Retailers	15.5	15.5	15.9	0.0	-0.4	0.00	-2.52
<b>Trans, Warehousing, and Utilities</b>	<b>84.1</b>	<b>83.8</b>	<b>87.5</b>	<b>0.3</b>	<b>-3.4</b>	<b>0.36</b>	<b>-3.89</b>
Utilities	12.7	12.7	12.9	0.0	-0.2	0.00	-1.55
Transportation and Warehousing	71.4	71.1	74.6	0.3	-3.2	0.42	-4.29
Truck Transportation	24.7	24.7	26.0	0.0	-1.3	0.00	-5.00

p = Preliminary r = Revised

1/ Data include, on a place of work basis, all full and part-time nonagricultural wage and salary employees who worked during or received pay for, any part of the pay period which included the 12th of the month. Proprietors, self-employed persons, workers in private households and unpaid family workers are excluded. Estimates adjusted to a 2025 benchmark, based on the North American Industry Classification System (NAICS), 2022. Totals may not add due to rounding.



**EMPLOYEES IN NONAGRICULTURAL INDUSTRIES IN ALABAMA <sup>1/</sup>**  
(in thousands)

INDUSTRY				NET CHANGE FROM:		PERCENT CHANGE FROM:	
	Apr p 2026	Mar r 2026	Apr r 2025	Mar r 2026	Apr r 2025	Mar r 2026	Apr r 2025
<b>Information</b>	<b>21.6</b>	<b>21.6</b>	<b>22.6</b>	<b>0.0</b>	<b>-1.0</b>	<b>0.00</b>	<b>-4.42</b>
<b>Financial Activities</b>	<b>102.7</b>	<b>102.4</b>	<b>103.8</b>	<b>0.3</b>	<b>-1.1</b>	<b>0.29</b>	<b>-1.06</b>
Finance and Insurance	73.9	73.8	75.7	0.1	-1.8	0.14	-2.38
Credit Intermediation and Related Activities	37.1	36.8	37.3	0.3	-0.2	0.82	-0.54
Insurance Carriers and Related Activities	30.9	31.1	32.7	-0.2	-1.8	-0.64	-5.50
Real Estate and Rental and Leasing	28.8	28.6	28.1	0.2	0.7	0.70	2.49
<b>Professional and Business Services</b>	<b>266.6</b>	<b>264.1</b>	<b>263.9</b>	<b>2.5</b>	<b>2.7</b>	<b>0.95</b>	<b>1.02</b>
Professional, Scientific and Technical Services	131.1	130.7	126.6	0.4	4.5	0.31	3.55
Architectural, Engineering, and Related Services	34.2	33.9	32.9	0.3	1.3	0.88	3.95
Computer Systems Design and Related Services	27.4	27.2	26.2	0.2	1.2	0.74	4.58
Management of Companies and Enterprises	17.2	17.3	17.3	-0.1	-0.1	-0.58	-0.58
Admin, Support & Waste Mngmt & Remediation Svcs.	118.3	116.1	120.0	2.2	-1.7	1.89	-1.42
<b>Private Education and Health Services</b>	<b>267.6</b>	<b>267.5</b>	<b>263.5</b>	<b>0.1</b>	<b>4.1</b>	<b>0.04</b>	<b>1.56</b>
Private Educational Services	32.9	32.9	32.9	0.0	0.0	0.00	0.00
Health Care and Social Assistance	234.7	234.6	230.6	0.1	4.1	0.04	1.78
Ambulatory Health Care Services	113.1	112.6	111.2	0.5	1.9	0.44	1.71
Hospitals	40.3	40.7	40.1	-0.4	0.2	-0.98	0.50
Nursing and Residential Care Facilities	44.5	44.8	43.9	-0.3	0.6	-0.67	1.37
Social Assistance	36.8	36.5	35.4	0.3	1.4	0.82	3.95
<b>Leisure and Hospitality</b>	<b>219.7</b>	<b>214.9</b>	<b>216.3</b>	<b>4.8</b>	<b>3.4</b>	<b>2.23</b>	<b>1.57</b>
Arts, Entertainment, and Recreation	25.0	24.0	24.0	1.0	1.0	4.17	4.17
Amusements, Gambling, and Recreation	19.6	19.1	18.9	0.5	0.7	2.62	3.70
Accommodation and Food Services	194.7	190.9	192.3	3.8	2.4	1.99	1.25
Food Services and Drinking Places	175.6	173.1	175.1	2.5	0.5	1.44	0.29
Restaurants and Other Eating Places	163.5	161.3	163.8	2.2	-0.3	1.36	-0.18
Full-Service Restaurants	69.1	67.3	66.0	1.8	3.1	2.67	4.70
Limited-Service Eating Places	94.4	94.0	97.8	0.4	-3.4	0.43	-3.48
<b>Other Services</b>	<b>95.8</b>	<b>94.4</b>	<b>93.8</b>	<b>1.4</b>	<b>2.0</b>	<b>1.48</b>	<b>2.13</b>
<b>Government</b>	<b>431.7</b>	<b>431.2</b>	<b>427.0</b>	<b>0.5</b>	<b>4.7</b>	<b>0.12</b>	<b>1.10</b>
Federal Government	53.1	53.1	58.5	0.0	-5.4	0.00	-9.23
State Government	141.1	141.4	136.7	-0.3	4.4	-0.21	3.22
State Government Educational Services	80.1	80.5	76.7	-0.4	3.4	-0.50	4.43
State Government Excluding Educational Services	61.0	60.9	60.0	0.1	1.0	0.16	1.67
Local Government	237.5	236.7	231.8	0.8	5.7	0.34	2.46
Local Government Educational Services	105.8	106.1	103.5	-0.3	2.3	-0.28	2.22
Local Government Excluding Educational Services	131.7	130.6	128.3	1.1	3.4	0.84	2.65

p = Preliminary r = Revised

<sup>1/</sup> Data include, on a place of work basis, all full and part-time nonagricultural wage and salary employees who worked during or received pay for, any part of the pay period which included the 12th of the month. Proprietors, self-employed persons, workers in private households and unpaid family workers are excluded. Estimates adjusted to a 2025 benchmark, based on the North American Industry Classification System (NAICS), 2022. Totals may not add due to rounding.

ESTIMATES PREPARED BY THE U.S. DEPARTMENT OF LABOR, BUREAU OF LABOR STATISTICS



## NONAGRICULTURAL WAGE AND SALARY EMPLOYMENT IN ALABAMA 1/ (in thousands)

INDUSTRY	Not Seasonally Adjusted			Seasonally Adjusted <sup>3/</sup>		
	Apr p 2026	Mar r 2026	Apr r 2025	Apr p 2026	Mar r 2026	Apr r 2025
<b>Total Nonfarm<sup>2/</sup></b>	<b>2211.3</b>	<b>2198.5</b>	<b>2198.1</b>	<b>2209.9</b>	<b>2205.1</b>	<b>2196.5</b>
<b>Total Private</b>	<b>1779.6</b>	<b>1767.3</b>	<b>1771.1</b>	<b>1780.0</b>	<b>1776.6</b>	<b>1771.2</b>
<b>Goods Producing</b>	<b>404.2</b>	<b>402.7</b>	<b>402.7</b>	<b>405.4</b>	<b>404.1</b>	<b>402.8</b>
Mining and Logging	9.6	9.4	9.3	9.6	9.4	9.3
Construction	111.8	110.8	108.6	112.4	111.4	108.5
Manufacturing	282.8	282.5	284.8	283.4	283.3	285.0
<b>Service Providing</b>	<b>1807.1</b>	<b>1795.8</b>	<b>1795.4</b>	<b>1804.5</b>	<b>1801.0</b>	<b>1793.7</b>
<b>Private Service Providing</b>	<b>1375.4</b>	<b>1364.6</b>	<b>1368.4</b>	<b>1374.6</b>	<b>1372.5</b>	<b>1368.4</b>
Trade, Transportation, and Utilities	401.4	399.7	404.5	403.4	402.5	407.2
Wholesale Trade	77.3	77.7	79.1	77.6	77.9	78.9
Retail Trade	240.0	238.2	237.9	240.4	239.6	239.2
Transportation, Warehousing, and Utilities	84.1	83.8	87.5	85.4	85.0	89.1
Information	21.6	21.6	22.6	21.6	21.8	22.7
Financial Activities	102.7	102.4	103.8	103.1	103.0	104.2
Finance and Insurance	73.9	73.8	75.7	74.3	74.2	76.1
Real Estate and Rental and Leasing	28.8	28.6	28.1	28.8	28.8	28.1
Professional and Business Services	266.6	264.1	263.9	265.0	264.7	263.1
Professional, Scientific, and Tech Services	131.1	130.7	126.6	130.2	129.6	126.2
Management of Companies and Enterprises	17.2	17.3	17.3	17.3	17.4	17.4
Admin, Supp & Waste Manage & Remed Services	118.3	116.1	120.0	117.5	117.7	119.5
Private Education and Health Services	267.6	267.5	263.5	267.2	267.6	263.6
Private Educational Services	32.9	32.9	32.9	32.0	32.0	32.0
Health Care and Social Assistance	234.7	234.6	230.6	235.2	235.6	231.6
Leisure and Hospitality	219.7	214.9	216.3	218.8	218.5	214.1
Arts, Entertainment, and Recreation	25.0	24.0	24.0	25.5	25.1	24.1
Accommodation and Food Services	194.7	190.9	192.3	193.3	193.4	190.0
Other Services	95.8	94.4	93.8	95.5	94.4	93.5
<b>Government</b>	<b>431.7</b>	<b>431.2</b>	<b>427.0</b>	<b>429.9</b>	<b>428.5</b>	<b>425.3</b>
Federal Government	53.1	53.1	58.5	53.2	53.1	58.4
State Government	141.1	141.4	136.7	140.3	139.7	136.2
Local Government	237.5	236.7	231.8	236.4	235.7	230.7

METROPOLITAN STATISTICAL AREAS Total Nonfarm Employment	Not Seasonally Adjusted			Seasonally Adjusted		
	Apr p 2026	Mar r 2026	Apr r 2025	Apr p 2026	Mar r 2026	Apr r 2025
<b>Anniston-Oxford</b>	46.5	46.3	46.2	46.5	46.5	46.2
<b>Auburn-Opelika</b>	83.4	82.7	82.4	83.0	82.9	82.1
<b>Birmingham</b>	568.4	567.2	564.7	568.9	569.2	566.1
<b>Daphne-Fairhope-Foley</b>	94.3	93.2	92.8	94.1	93.9	92.4
<b>Decatur</b>	63.7	63.4	63.2	63.7	63.7	63.2
<b>Dothan</b>	63.8	63.5	64.2	63.8	63.7	64.1
<b>Florence-Muscle Shoals</b>	60.1	59.7	59.8	59.8	59.7	59.5
<b>Gadsden</b>	35.0	34.9	35.1	35.0	35.0	35.0
<b>Huntsville</b>	294.4	292.7	292.5	294.0	293.1	292.0
<b>Mobile</b>	188.2	186.6	188.9	187.9	187.3	189.4
<b>Montgomery</b>	184.9	183.7	184.4	184.9	184.5	184.6
<b>Tuscaloosa</b>	117.8	116.9	117.9	117.4	117.1	117.1

p= Preliminary    r= Revised

1/ Nonagricultural wage and salary employment estimates prepared by the United States Department of Labor. Data estimated on place of work basis and seasonally adjusted by use of the Bureau of Labor Statistics X-12 Seasonal Adjustment method.

2/ Total Nonfarm employment may not equal sum of data in seasonally adjusted columns due to some series not being seasonally adjusted.

3/ A 3-month average of seasonally adjusted over-the-month change is available at [www.bls.gov/sae/tables/state-news-release/home.htm](http://www.bls.gov/sae/tables/state-news-release/home.htm)



**HOURS AND EARNINGS DATA FOR SELECTED  
NONAGRICULTURAL INDUSTRIES IN ALABAMA<sup>1/</sup>**

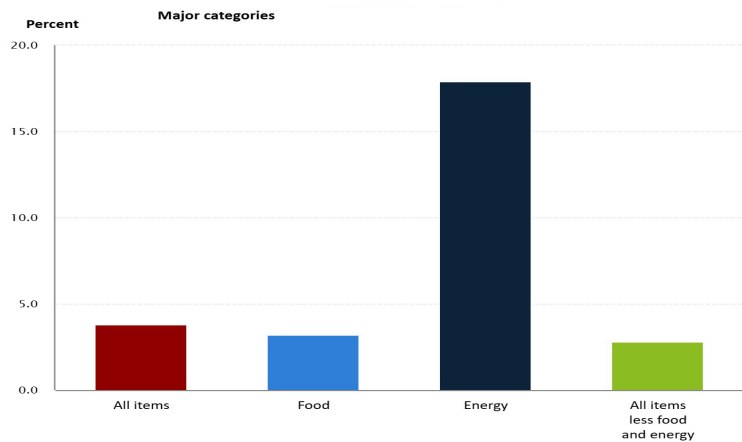
STATEWIDE INDUSTRY	All Employees (in thousands)			Average Weekly Earnings			Average Weekly Hours			Average Hourly Earnings		
	Apr p 2026	Mar r 2026	Apr r 2025	Apr p 2026	Mar r 2026	Apr r 2025	Apr p 2026	Mar r 2026	Apr r 2025	Apr p 2026	Mar r 2026	Apr r 2025
<b>Total Private</b>	1,779.6	1,767.3	1,771.1	\$1,164.57	\$1,169.62	\$1,101.01	35.8	35.9	35.3	\$32.53	\$32.58	\$31.19
<b>Goods Producing</b>	404.2	402.7	402.7	\$1,407.68	\$1,389.30	\$1,340.88	42.4	42.1	42.5	\$33.20	\$33.00	\$31.55
Construction	111.8	110.8	108.6	\$1,408.45	\$1,408.63	\$1,396.51	42.5	41.7	43.6	\$33.14	\$33.78	\$32.03
Manufacturing	282.8	282.5	284.8	\$1,407.08	\$1,376.83	\$1,343.73	42.6	42.6	41.9	\$33.03	\$32.32	\$32.07
<b>Private Service Providing</b>	1,375.4	1,364.6	1,368.4	\$1,094.29	\$1,105.86	\$1,030.86	33.9	34.1	33.2	\$32.28	\$32.43	\$31.05
Trade, Transportation, and Utilities	401.4	399.7	404.5	\$985.67	\$990.15	\$926.97	34.5	34.5	33.0	\$28.57	\$28.70	\$28.09
Financial Activities	102.7	102.4	103.8	\$1,349.76	\$1,355.31	\$1,300.51	37.0	37.0	37.2	\$36.48	\$36.63	\$34.96
Professional and Business Services	266.6	264.1	263.9	\$1,436.16	\$1,489.92	\$1,384.05	37.4	38.4	36.8	\$38.40	\$38.80	\$37.61
Private Education and Health Services	267.6	267.5	263.5	\$1,049.56	\$1,042.08	\$1,024.43	33.5	33.4	33.5	\$31.33	\$31.20	\$30.58
Leisure and Hospitality	219.7	214.9	216.3	\$475.49	\$463.50	\$430.50	25.4	25.0	24.6	\$18.72	\$18.54	\$17.50
Other Services	95.8	94.4	93.8	\$938.06	\$941.47	\$905.94	31.0	31.0	31.5	\$30.26	\$30.37	\$28.76
<b>MANUFACTURING: PRODUCTION WORKERS</b>												
<b>Manufacturing</b>	210.2	209.4	206.1	\$1,192.56	\$1,179.71	\$1,098.16	44.3	44.3	42.4	\$26.92	\$26.63	\$25.90
Durable Goods	137.2	136.3	135.9	\$1,169.05	\$1,170.75	\$1,117.98	44.4	44.6	43.4	\$26.33	\$26.25	\$25.76
Non-Durable Goods	73.0	73.1	70.2	\$1,233.32	\$1,194.76	\$1,061.10	44.0	43.7	40.5	\$28.03	\$27.34	\$26.20
<b>METROPOLITAN STATISTICAL AREAS</b>												
Anniston-Oxford	46.5	46.3	46.2	\$846.45	\$842.16	\$722.57	33.0	33.0	32.2	\$25.65	\$25.52	\$22.44
Auburn-Opelika	83.4	82.7	82.4	\$861.90	\$889.29	\$759.83	32.5	32.9	30.9	\$26.52	\$27.03	\$24.59
Birmingham	568.4	567.2	564.7	\$1,164.83	\$1,165.29	\$1,159.70	35.6	35.8	35.4	\$32.72	\$32.55	\$32.76
Daphne-Fairhope-Foley	94.3	93.2	92.8	\$909.36	\$934.65	\$842.08	32.9	33.5	32.5	\$27.64	\$27.90	\$25.91
Decatur	63.7	63.4	63.2	\$1,080.77	\$1,069.40	\$1,154.79	37.0	36.3	37.8	\$29.21	\$29.46	\$30.55
Dothan	63.8	63.5	64.2	\$841.42	\$818.74	\$775.22	34.4	33.5	33.2	\$24.46	\$24.44	\$23.35
Florence-Muscle Shoals	60.1	59.7	59.8	\$946.05	\$912.97	\$902.65	35.7	35.4	35.0	\$26.50	\$25.79	\$25.79
Gadsden	35.0	34.9	35.1	\$781.70	\$799.26	\$812.25	32.9	33.0	34.2	\$23.76	\$24.22	\$23.75
Huntsville	294.4	292.7	292.5	\$1,374.45	\$1,409.08	\$1,362.20	35.0	35.7	34.6	\$39.27	\$39.47	\$39.37
Mobile	188.2	186.6	188.9	\$1,241.25	\$1,237.61	\$1,118.00	37.5	37.3	36.5	\$33.10	\$33.18	\$30.63
Montgomery	184.9	183.7	184.4	\$1,147.32	\$1,146.33	\$1,086.97	36.0	35.7	36.1	\$31.87	\$32.11	\$30.11
Tuscaloosa	117.8	116.9	117.9	\$967.22	\$964.99	\$950.54	35.3	34.9	33.6	\$27.40	\$27.65	\$28.29

p = Preliminary r = Revised

<sup>1/</sup> Estimates, computed on a gross basis, do not represent straight time earnings or standard workweek.

**Consumer Price Index**

12-month percentage change, Consumer Price Index, selected categories, April 2026, not seasonally adjusted



Source: U.S. Bureau of Labor Statistics.

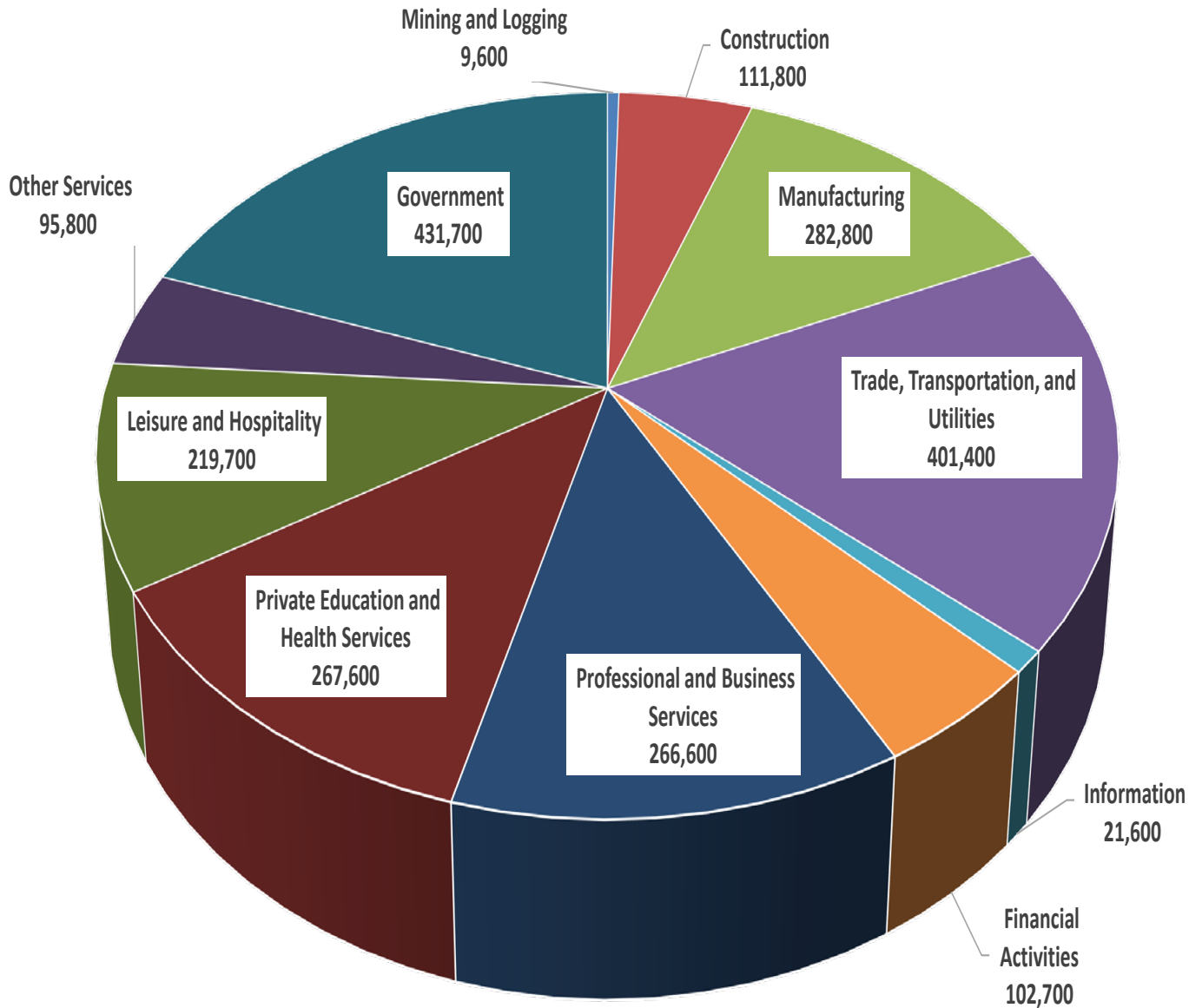
The Consumer Price Index for All Urban Consumers (CPI-U) increased 3.8 percent over the last 12 months to an index level of 333.020 (1982-84=100). For April, the index increased 0.9 percent prior to seasonal adjustment.

The Consumer Price Index for Urban Wage Earners and Clerical Workers (CPI-W) increased 3.9 percent over the last 12 months to an index level of 326.541 (1982-84=100). For April, the index increased 0.9 percent prior to seasonal adjustment.

For further details, visit the CPI homepage online at <https://www.bls.gov/cpi/> or contact the CPI Information Office at (202) 691-7000.



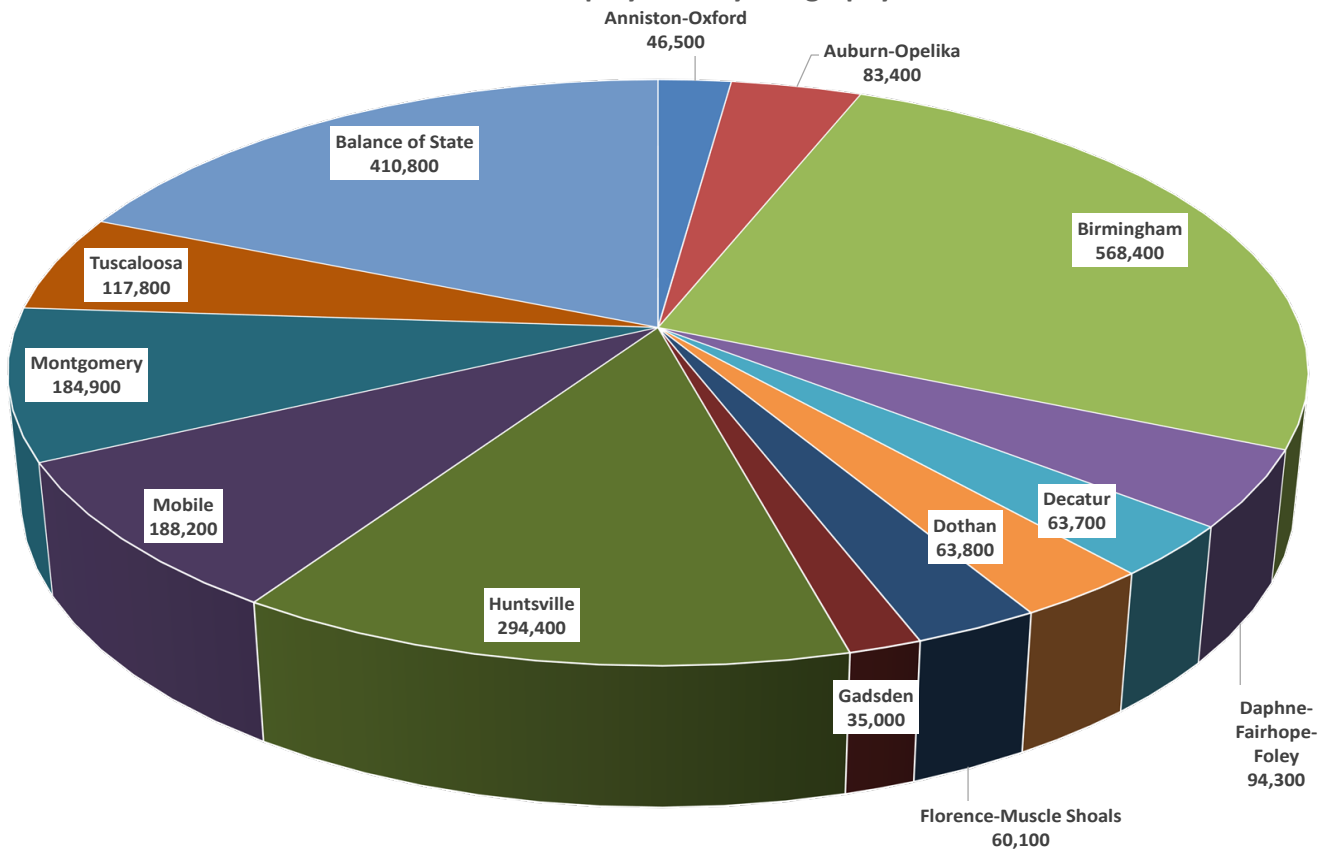
### Alabama April 2026 Preliminary Current Employment Statistics Statewide Employment by Industry Sector



Estimates prepared by the U.S. Department of Labor, Bureau of Labor Statistics and adjusted to a 2025 benchmark, based on the North American Industry Classification System (NAICS), 2022.



### Alabama April 2026 Preliminary Current Employment Statistics Statewide Employment by Geography



Estimates prepared by the U.S. Department of Labor, Bureau of Labor Statistics and adjusted to a 2025 benchmark, based on the North American Industry Classification System (NAICS), 2022.



**NONAGRICULTURAL WAGE AND SALARY EMPLOYMENT  
FOR ALABAMA METROPOLITAN STATISTICAL AREAS (MSA'S)1/**

<b><u>ANNISTON-OXFORD MSA</u></b>	<b>Apr p</b>	<b>Mar r</b>	<b>Apr r</b>	<b>Net Change From :</b>	
				<b>Mar r</b>	<b>Apr r</b>
	<b>2026</b>	<b>2026</b>	<b>2025</b>	<b>2026</b>	<b>2025</b>
<b>TOTAL NONAGRICULTURAL EMPLOYMENT</b>	<b>46,500</b>	<b>46,300</b>	<b>46,200</b>	<b>200</b>	<b>300</b>
<b>GOODS PRODUCING</b>	<b>7,900</b>	<b>7,900</b>	<b>7,800</b>	<b>0</b>	<b>100</b>
Mining, Logging, and Construction	1,500	1,500	1,400	0	100
Manufacturing	6,400	6,400	6,400	0	0
<b>SERVICE PROVIDING</b>	<b>38,600</b>	<b>38,400</b>	<b>38,400</b>	<b>200</b>	<b>200</b>
Trade, Transportation, and Utilities	9,100	9,100	9,000	0	100
Wholesale Trade	1,700	1,700	1,700	0	0
Retail Trade	6,100	6,100	6,000	0	100
Transportation, Warehousing and Utilities	1,300	1,300	1,300	0	0
Information	300	300	300	0	0
Financial Activities	1,400	1,400	1,400	0	0
Professional and Business Services	3,500	3,400	3,400	100	100
Private Education and Health Services	4,700	4,700	4,700	0	0
Leisure and Hospitality	5,300	5,200	5,200	100	100
Other Services	1,800	1,800	1,800	0	0
Government	12,500	12,500	12,600	0	-100
Federal	3,200	3,200	3,400	0	-200
State and Local	9,300	9,300	9,200	0	100

1 Place of work basis. p Preliminary. r Revised.

NOTE: Estimates prepared by the U.S. Department of Labor, Bureau of Labor Statistics.

Estimates adjusted to a 2025 benchmark. Based on the North American Industry Classification System (NAICS), 2022.

<b><u>AUBURN-OPELIKA MSA</u></b>	<b>Apr p</b>	<b>Mar r</b>	<b>Apr r</b>	<b>Net Change From :</b>	
				<b>Mar r</b>	<b>Apr r</b>
	<b>2026</b>	<b>2026</b>	<b>2025</b>	<b>2026</b>	<b>2025</b>
<b>TOTAL NONAGRICULTURAL EMPLOYMENT</b>	<b>83,400</b>	<b>82,700</b>	<b>82,400</b>	<b>700</b>	<b>1,000</b>
<b>GOODS PRODUCING</b>	<b>11,400</b>	<b>11,300</b>	<b>11,400</b>	<b>100</b>	<b>0</b>
Mining, Logging, and Construction	3,900	3,900	3,800	0	100
Manufacturing	7,500	7,400	7,600	100	-100
<b>SERVICE PROVIDING</b>	<b>72,000</b>	<b>71,400</b>	<b>71,000</b>	<b>600</b>	<b>1,000</b>
Trade, Transportation, and Utilities	13,300	13,300	13,400	0	-100
Wholesale Trade	1,600	1,600	1,600	0	0
Retail Trade	8,500	8,500	8,500	0	0
Transportation, Warehousing and Utilities	3,200	3,200	3,300	0	-100
Information	800	800	800	0	0
Financial Activities	3,000	3,000	3,000	0	0
Professional and Business Services	9,100	9,100	9,500	0	-400
Private Education and Health Services	6,500	6,400	6,200	100	300
Leisure and Hospitality	10,900	10,600	10,500	300	400
Other Services	2,800	2,800	2,700	0	100
Government	25,600	25,400	24,900	200	700
Federal	1,200	1,200	1,300	0	-100
State and Local	24,400	24,200	23,600	200	800

1 Place of work basis. p Preliminary. r Revised.

NOTE: Estimates prepared by the U.S. Department of Labor, Bureau of Labor Statistics.

Estimates adjusted to a 2025 benchmark. Based on the North American Industry Classification System (NAICS), 2022.



**NONAGRICULTURAL WAGE AND SALARY EMPLOYMENT  
FOR ALABAMA METROPOLITAN STATISTICAL AREAS (MSA'S)<sup>1/</sup>**

<b><u>BIRMINGHAM MSA</u></b>	<b>Apr p 2026</b>	<b>Mar r 2026</b>	<b>Apr r 2025</b>	<b>Net Change From :</b>	
				<b>Mar r 2026</b>	<b>Apr r 2025</b>
<b>TOTAL NONAGRICULTURAL EMPLOYMENT</b>	<b>568,400</b>	<b>567,200</b>	<b>564,700</b>	<b>1,200</b>	<b>3,700</b>
<b>GOODS PRODUCING</b>	<b>73,600</b>	<b>73,200</b>	<b>74,000</b>	<b>400</b>	<b>-400</b>
Mining and Logging	2,500	2,500	2,400	0	100
Construction	31,000	30,900	31,300	100	-300
Specialty Trade Contractors	18,600	18,600	19,300	0	-700
Manufacturing	40,100	39,800	40,300	300	-200
Durable Goods	28,300	28,100	28,300	200	0
Primary Metal Manufacturing	5,400	5,300	5,300	100	100
Nondurable Goods	11,800	11,700	12,000	100	-200
<b>SERVICE PROVIDING</b>	<b>494,800</b>	<b>494,000</b>	<b>490,700</b>	<b>800</b>	<b>4,100</b>
Trade, Transportation, and Utilities	112,700	112,500	113,700	200	-1,000
Wholesale Trade	27,300	27,400	28,500	-100	-1,200
Merchant Wholesalers	14,600	14,700	15,000	-100	-400
Retail Trade	58,400	58,000	57,500	400	900
General Merchandise Retailers	13,700	13,700	13,200	0	500
Transportation, Warehousing and Utilities	27,000	27,100	27,700	-100	-700
Utilities	6,200	6,300	6,400	-100	-200
Transportation and Warehousing	20,800	20,800	21,300	0	-500
Information	8,500	8,500	9,200	0	-700
Financial Activities	42,800	43,100	43,500	-300	-700
Finance and Insurance	34,700	34,900	35,400	-200	-700
Credit Intermediation and Related	14,600	14,500	14,600	100	0
Insurance Carriers and Related	17,700	17,800	17,800	-100	-100
Professional and Business Services	74,900	74,800	74,100	100	800
Professional, Scientific and Technical Services	32,600	32,800	31,700	-200	900
Management of Companies and Enterprises	9,400	9,400	9,500	0	-100
Admin., Support and Waste Management	32,900	32,600	32,900	300	0
Private Education and Health Services	77,600	77,800	76,600	-200	1,000
Health Care and Social Assistance	69,500	69,400	67,800	100	1,700
Ambulatory Healthcare	35,500	35,500	35,500	0	0
Hospitals	14,000	14,100	13,100	-100	900
Leisure and Hospitality	54,400	53,500	52,100	900	2,300
Food Service and Drinking Places	42,900	42,400	41,700	500	1,200
Other Services	27,200	26,800	26,900	400	300
Government	96,700	97,000	94,600	-300	2,100
Federal	9,300	9,400	9,700	-100	-400
State	40,800	40,900	39,200	-100	1,600
Local	46,600	46,700	45,700	-100	900

<sup>1</sup> Place of work basis. p Preliminary. r Revised.

NOTE: Estimates prepared by the U.S. Department of Labor, Bureau of Labor Statistics.

Estimates adjusted to a 2025 benchmark. Based on the North American Industry Classification System (NAICS), 2022.

<b><u>DAPHNE-FAIRHOPE-FOLEY MSA</u></b>	<b>Apr p 2026</b>	<b>Mar r 2026</b>	<b>Apr r 2025</b>	<b>Net Change From :</b>	
				<b>Mar r 2026</b>	<b>Apr r 2025</b>
<b>TOTAL NONAGRICULTURAL EMPLOYMENT</b>	<b>94,300</b>	<b>93,200</b>	<b>92,800</b>	<b>1,100</b>	<b>1,500</b>
<b>GOODS PRODUCING</b>	<b>11,100</b>	<b>10,800</b>	<b>10,900</b>	<b>300</b>	<b>200</b>
<b>SERVICE PROVIDING</b>	<b>83,200</b>	<b>82,400</b>	<b>81,900</b>	<b>800</b>	<b>1,300</b>
Government	12,100	12,100	11,900	0	200

<sup>1</sup> Place of work basis. p Preliminary. r Revised.

NOTE: Estimates prepared by the U.S. Department of Labor, Bureau of Labor Statistics.

Estimates adjusted to a 2025 benchmark. Based on the North American Industry Classification System (NAICS), 2022.



**NONAGRICULTURAL WAGE AND SALARY EMPLOYMENT  
FOR ALABAMA METROPOLITAN STATISTICAL AREAS (MSA'S)<sup>1/</sup>**

<b><u>DECATUR MSA</u></b>	<b>Apr p</b>	<b>Mar r</b>	<b>Apr r</b>	<b>Net Change From :</b>	
				<b>2026</b>	<b>2025</b>
<b>TOTAL NONAGRICULTURAL EMPLOYMENT</b>	<b>63,700</b>	<b>63,400</b>	<b>63,200</b>	<b>300</b>	<b>500</b>
<b>GOODS PRODUCING</b>	<b>19,600</b>	<b>19,600</b>	<b>19,900</b>	<b>0</b>	<b>-300</b>
Mining, Logging, and Construction	4,600	4,600	4,700	0	-100
Manufacturing	15,000	15,000	15,200	0	-200
Durable Goods	8,800	8,800	8,800	0	0
Nondurable Goods	6,200	6,200	6,400	0	-200
<b>SERVICE PROVIDING</b>	<b>44,100</b>	<b>43,800</b>	<b>43,300</b>	<b>300</b>	<b>800</b>
Trade, Transportation, and Utilities	10,500	10,500	10,700	0	-200
Wholesale Trade	2,400	2,400	2,400	0	0
Retail Trade	6,400	6,400	6,400	0	0
Transportation, Warehousing and Utilities	1,700	1,700	1,900	0	-200
Information	400	400	400	0	0
Financial Activities	2,400	2,400	2,400	0	0
Professional and Business Services	7,100	7,000	6,700	100	400
Private Education and Health Services	5,600	5,600	5,500	0	100
Leisure and Hospitality	5,600	5,500	5,600	100	0
Other Services	2,600	2,600	2,600	0	0
Government	9,900	9,800	9,400	100	500
Federal	400	400	400	0	0
State and Local	9,500	9,400	9,000	100	500

<sup>1</sup> Place of work basis. p Preliminary. r Revised.

NOTE: Estimates prepared by the U.S. Department of Labor, Bureau of Labor Statistics.

Estimates adjusted to a 2025 benchmark. Based on the North American Industry Classification System (NAICS), 2022.

<b><u>DOTHAN MSA</u></b>	<b>Apr p</b>	<b>Mar r</b>	<b>Apr r</b>	<b>Net Change From :</b>	
				<b>2026</b>	<b>2025</b>
<b>TOTAL NONAGRICULTURAL EMPLOYMENT</b>	<b>63,800</b>	<b>63,500</b>	<b>64,200</b>	<b>300</b>	<b>-400</b>
<b>GOODS PRODUCING</b>	<b>8,700</b>	<b>8,700</b>	<b>8,500</b>	<b>0</b>	<b>200</b>
Mining, Logging, and Construction	2,900	2,900	2,800	0	100
Manufacturing	5,800	5,800	5,700	0	100
<b>SERVICE PROVIDING</b>	<b>55,100</b>	<b>54,800</b>	<b>55,700</b>	<b>300</b>	<b>-600</b>
Trade, Transportation, and Utilities	15,900	15,900	16,200	0	-300
Wholesale Trade	3,000	3,100	3,300	-100	-300
Retail Trade	9,100	9,100	9,000	0	100
Transportation, Warehousing and Utilities	3,800	3,700	3,900	100	-100
Information	400	400	500	0	-100
Financial Activities	2,200	2,200	2,200	0	0
Professional and Business Services	5,500	5,500	6,200	0	-700
Private Education and Health Services	10,200	10,200	9,900	0	300
Leisure and Hospitality	6,800	6,700	6,700	100	100
Other Services	2,700	2,700	2,700	0	0
Government	11,400	11,200	11,300	200	100
Federal	400	400	400	0	0
State and Local	11,000	10,800	10,900	200	100

<sup>1</sup> Place of work basis. p Preliminary. r Revised.

NOTE: Estimates prepared by the U.S. Department of Labor, Bureau of Labor Statistics.

Estimates adjusted to a 2025 benchmark. Based on the North American Industry Classification System (NAICS), 2022.



**NONAGRICULTURAL WAGE AND SALARY EMPLOYMENT  
FOR ALABAMA METROPOLITAN STATISTICAL AREAS (MSA'S)<sup>1/</sup>**

<b><u>FLORENCE - MUSCLE SHOALS MSA</u></b>	<b>Apr p 2026</b>	<b>Mar r 2026</b>	<b>Apr r 2025</b>	<b>Net Change From :</b>	
				<b>Mar r 2026</b>	<b>Apr r 2025</b>
<b>TOTAL NONAGRICULTURAL EMPLOYMENT</b>	<b>60,100</b>	<b>59,700</b>	<b>59,800</b>	<b>400</b>	<b>300</b>
<b>GOODS PRODUCING</b>	<b>12,600</b>	<b>12,600</b>	<b>12,500</b>	<b>0</b>	<b>100</b>
Mining, Logging, and Construction	4,200	4,200	4,100	0	100
Manufacturing	8,400	8,400	8,400	0	0
<b>SERVICE PROVIDING</b>	<b>47,500</b>	<b>47,100</b>	<b>47,300</b>	<b>400</b>	<b>200</b>
Trade, Transportation, and Utilities	11,700	11,600	12,000	100	-300
Wholesale Trade	2,300	2,300	2,400	0	-100
Retail Trade	8,200	8,100	8,300	100	-100
Transportation, Warehousing and Utilities	1,200	1,200	1,300	0	-100
Information	500	500	500	0	0
Financial Activities	2,600	2,600	2,700	0	-100
Professional and Business Services	3,400	3,400	3,400	0	0
Private Education and Health Services	8,200	8,200	7,800	0	400
Leisure and Hospitality	7,200	7,000	6,900	200	300
Other Services	2,400	2,300	2,400	100	0
Government	11,500	11,500	11,600	0	-100
Federal	1,000	1,000	1,100	0	-100
State and Local	10,500	10,500	10,500	0	0

<sup>1</sup> Place of work basis. p Preliminary. r Revised.

NOTE: Estimates prepared by the U.S. Department of Labor, Bureau of Labor Statistics.

Estimates adjusted to a 2025 benchmark. Based on the North American Industry Classification System (NAICS), 2022.

<b><u>GADSDEN MSA</u></b>	<b>Apr p 2026</b>	<b>Mar r 2026</b>	<b>Apr r 2025</b>	<b>Net Change From :</b>	
				<b>Mar r 2026</b>	<b>Apr r 2025</b>
<b>TOTAL NONAGRICULTURAL EMPLOYMENT</b>	<b>35,000</b>	<b>34,900</b>	<b>35,100</b>	<b>100</b>	<b>-100</b>
<b>GOODS PRODUCING</b>	<b>5,300</b>	<b>5,400</b>	<b>5,400</b>	<b>-100</b>	<b>-100</b>
Mining, Logging, and Construction	1,200	1,200	1,200	0	0
Manufacturing	4,100	4,200	4,200	-100	-100
<b>SERVICE PROVIDING</b>	<b>29,700</b>	<b>29,500</b>	<b>29,700</b>	<b>200</b>	<b>0</b>
Trade, Transportation, and Utilities	6,600	6,600	6,600	0	0
Wholesale Trade	1,000	1,000	1,000	0	0
Retail Trade	4,600	4,600	4,500	0	100
Transportation, Warehousing and Utilities	1,000	1,000	1,100	0	-100
Information	200	200	200	0	0
Financial Activities	1,300	1,300	1,300	0	0
Professional and Business Services	2,800	2,800	2,800	0	0
Private Education and Health Services	7,800	7,800	7,700	0	100
Leisure and Hospitality	4,200	4,100	4,300	100	-100
Other Services	1,500	1,400	1,500	100	0
Government	5,300	5,300	5,300	0	0
Federal	300	300	300	0	0
State and Local	5,000	5,000	5,000	0	0

<sup>1</sup> Place of work basis. p Preliminary. r Revised.

NOTE: Estimates prepared by the U.S. Department of Labor, Bureau of Labor Statistics.

Estimates adjusted to a 2025 benchmark. Based on the North American Industry Classification System (NAICS), 2022.



**NONAGRICULTURAL WAGE AND SALARY EMPLOYMENT  
FOR ALABAMA METROPOLITAN STATISTICAL AREAS (MSA'S)1/**

<b>HUNTSVILLE MSA</b>	<b>Apr p 2026</b>	<b>Mar r 2026</b>	<b>Apr r 2025</b>	<b>Net Change From :</b>	
				<b>Mar r 2026</b>	<b>Apr r 2025</b>
<b>TOTAL NONAGRICULTURAL EMPLOYMENT</b>	<b>294,400</b>	<b>292,700</b>	<b>292,500</b>	<b>1,700</b>	<b>1,900</b>
<b>GOODS PRODUCING</b>	<b>47,400</b>	<b>47,400</b>	<b>47,400</b>	<b>0</b>	<b>0</b>
Mining, Logging, and Construction	12,100	12,100	11,700	0	400
Manufacturing	35,300	35,300	35,700	0	-400
Durable Goods	31,500	31,500	31,700	0	-200
Computer and Electronic Prod. Manufacturing	3,400	3,400	3,500	0	-100
Transportation Equipment Manufacturing	20,100	20,100	20,000	0	100
Nondurable Goods	3,800	3,800	4,000	0	-200
<b>SERVICE PROVIDING</b>	<b>247,000</b>	<b>245,300</b>	<b>245,100</b>	<b>1,700</b>	<b>1,900</b>
Trade, Transportation, and Utilities	41,700	41,400	40,800	300	900
Wholesale Trade	7,400	7,400	7,400	0	0
Retail Trade	28,400	28,100	27,700	300	700
General Merchandise Retailers	8,000	7,900	7,800	100	200
Transportation, Warehousing and Utilities	5,900	5,900	5,700	0	200
Information	2,600	2,600	2,600	0	0
Financial Activities	9,300	9,300	9,000	0	300
Professional and Business Services	70,300	69,800	68,900	500	1,400
Professional, Scientific and Technical Services	52,700	52,200	50,900	500	1,800
Private Education and Health Services	26,300	26,000	25,700	300	600
Leisure and Hospitality	26,500	26,100	26,700	400	-200
Food Services and Drinking Places	20,900	20,500	21,100	400	-200
Other Services	10,500	10,400	10,200	100	300
Government	59,800	59,700	61,200	100	-1,400
Federal	18,900	18,800	21,700	100	-2,800
State	8,900	9,000	8,600	-100	300
Local	32,000	31,900	30,900	100	1,100

1 Place of work basis. p Preliminary. r Revised.

NOTE: Estimates prepared by the U.S. Department of Labor, Bureau of Labor Statistics.

Estimates adjusted to a 2025 benchmark. Based on the North American Industry Classification System (NAICS), 2022.

<b>MOBILE MSA</b>	<b>Apr p 2026</b>	<b>Mar r 2026</b>	<b>Apr r 2025</b>	<b>Net Change From :</b>	
				<b>Mar r 2026</b>	<b>Apr r 2025</b>
<b>TOTAL NONAGRICULTURAL EMPLOYMENT</b>	<b>188,200</b>	<b>186,600</b>	<b>188,900</b>	<b>1,600</b>	<b>-700</b>
<b>GOODS PRODUCING</b>	<b>33,800</b>	<b>33,200</b>	<b>32,500</b>	<b>600</b>	<b>1,300</b>
Mining, Logging, and Construction	15,100	14,600	13,900	500	1,200
Manufacturing	18,700	18,600	18,600	100	100
<b>SERVICE PROVIDING</b>	<b>154,400</b>	<b>153,400</b>	<b>156,400</b>	<b>1,000</b>	<b>-2,000</b>
Trade, Transportation, and Utilities	36,900	36,900	37,900	0	-1,000
Wholesale Trade	8,100	8,200	8,200	-100	-100
Retail Trade	19,000	18,900	19,300	100	-300
General Merchandise Retailers	4,800	4,700	4,700	100	100
Transportation, Warehousing and Utilities	9,800	9,800	10,400	0	-600
Information	2,000	2,000	2,200	0	-200
Financial Activities	7,400	7,200	8,300	200	-900
Professional and Business Services	21,700	21,300	22,300	400	-600
Private Education and Health Services	29,300	29,200	29,100	100	200
Health Care and Social Assistance	25,600	25,500	25,400	100	200
Leisure and Hospitality	17,800	17,500	17,700	300	100
Food Services and Drinking Places	14,100	13,900	14,400	200	-300
Other Services	9,800	9,700	9,500	100	300
Government	29,500	29,600	29,400	-100	100
Federal	2,800	2,800	3,000	0	-200
State	11,400	11,400	11,200	0	200
Local	15,300	15,400	15,200	-100	100

1 Place of work basis. p Preliminary. r Revised.

NOTE: Estimates prepared by the U.S. Department of Labor, Bureau of Labor Statistics.

Estimates adjusted to a 2025 benchmark. Based on the North American Industry Classification System (NAICS), 2022.



**NONAGRICULTURAL WAGE AND SALARY EMPLOYMENT  
FOR ALABAMA METROPOLITAN STATISTICAL AREAS (MSA'S)<sup>1/</sup>**

<b><u>MONTGOMERY MSA</u></b>	<b>Apr p 2026</b>	<b>Mar r 2026</b>	<b>Apr r 2025</b>	<b>Net Change From :</b>	
				<b>Mar r 2026</b>	<b>Apr r 2025</b>
<b>TOTAL NONAGRICULTURAL EMPLOYMENT</b>	<b>184,900</b>	<b>183,700</b>	<b>184,400</b>	<b>1,200</b>	<b>500</b>
<b>GOODS PRODUCING</b>	<b>27,900</b>	<b>27,900</b>	<b>27,900</b>	<b>0</b>	<b>0</b>
Mining, Logging, and Construction	8,100	8,100	7,800	0	300
Manufacturing	19,800	19,800	20,100	0	-300
<b>SERVICE PROVIDING</b>	<b>157,000</b>	<b>155,800</b>	<b>156,500</b>	<b>1,200</b>	<b>500</b>
Trade, Transportation, and Utilities	30,200	29,900	30,500	300	-300
Wholesale Trade	5,900	5,900	6,100	0	-200
Retail Trade	17,600	17,300	17,500	300	100
General Merchandise Retailers	4,900	4,800	4,800	100	100
Transportation, Warehousing and Utilities	6,700	6,700	6,900	0	-200
Information	1,800	1,800	1,800	0	0
Financial Activities	8,200	8,200	8,200	0	0
Finance and Insurance	5,800	5,800	5,900	0	-100
Professional and Business Services	22,500	22,300	22,200	200	300
Private Education and Health Services	21,300	21,200	21,200	100	100
Health Care and Social Assistance	16,300	16,200	16,200	100	100
Leisure and Hospitality	17,900	17,400	17,900	500	0
Food Services and Drinking Places	13,300	13,000	13,700	300	-400
Other Services	8,200	8,100	8,000	100	200
Government	46,900	46,900	46,700	0	200
Federal	7,400	7,300	8,200	100	-800
State	24,900	25,000	24,100	-100	800
Local	14,600	14,600	14,400	0	200

<sup>1</sup> Place of work basis. p Preliminary. r Revised.

NOTE: Estimates prepared by the U.S. Department of Labor, Bureau of Labor Statistics.

Estimates adjusted to a 2025 benchmark. Based on the North American Industry Classification System (NAICS), 2022.

<b><u>TUSCALOOSA MSA</u></b>	<b>Apr p 2026</b>	<b>Mar r 2026</b>	<b>Apr r 2025</b>	<b>Net Change From :</b>	
				<b>Mar r 2026</b>	<b>Apr r 2025</b>
<b>TOTAL NONAGRICULTURAL EMPLOYMENT</b>	<b>117,800</b>	<b>116,900</b>	<b>117,900</b>	<b>900</b>	<b>-100</b>
<b>GOODS PRODUCING</b>	<b>27,000</b>	<b>27,000</b>	<b>27,200</b>	<b>0</b>	<b>-200</b>
Mining, Logging, and Construction	7,500	7,500	7,500	0	0
Manufacturing	19,500	19,500	19,700	0	-200
<b>SERVICE PROVIDING</b>	<b>90,800</b>	<b>89,900</b>	<b>90,700</b>	<b>900</b>	<b>100</b>
Trade, Transportation, and Utilities	17,200	17,100	17,700	100	-500
Wholesale Trade	2,400	2,400	2,400	0	0
Retail Trade	11,700	11,600	11,800	100	-100
Transportation, Warehousing and Utilities	3,100	3,100	3,500	0	-400
Information	600	600	600	0	0
Financial Activities	4,000	4,000	4,000	0	0
Professional and Business Services	9,200	9,200	9,300	0	-100
Private Education and Health Services	10,800	10,700	10,800	100	0
Leisure and Hospitality	13,000	12,500	12,800	500	200
Other Services	4,400	4,400	4,300	0	100
Government	31,600	31,400	31,200	200	400
Federal	2,100	2,100	2,200	0	-100
State	15,400	15,300	15,100	100	300
Local	14,100	14,000	13,900	100	200

<sup>1</sup> Place of work basis. p Preliminary. r Revised.

NOTE: Estimates prepared by the U.S. Department of Labor, Bureau of Labor Statistics.

Estimates adjusted to a 2025 benchmark. Based on the North American Industry Classification System (NAICS), 2022.

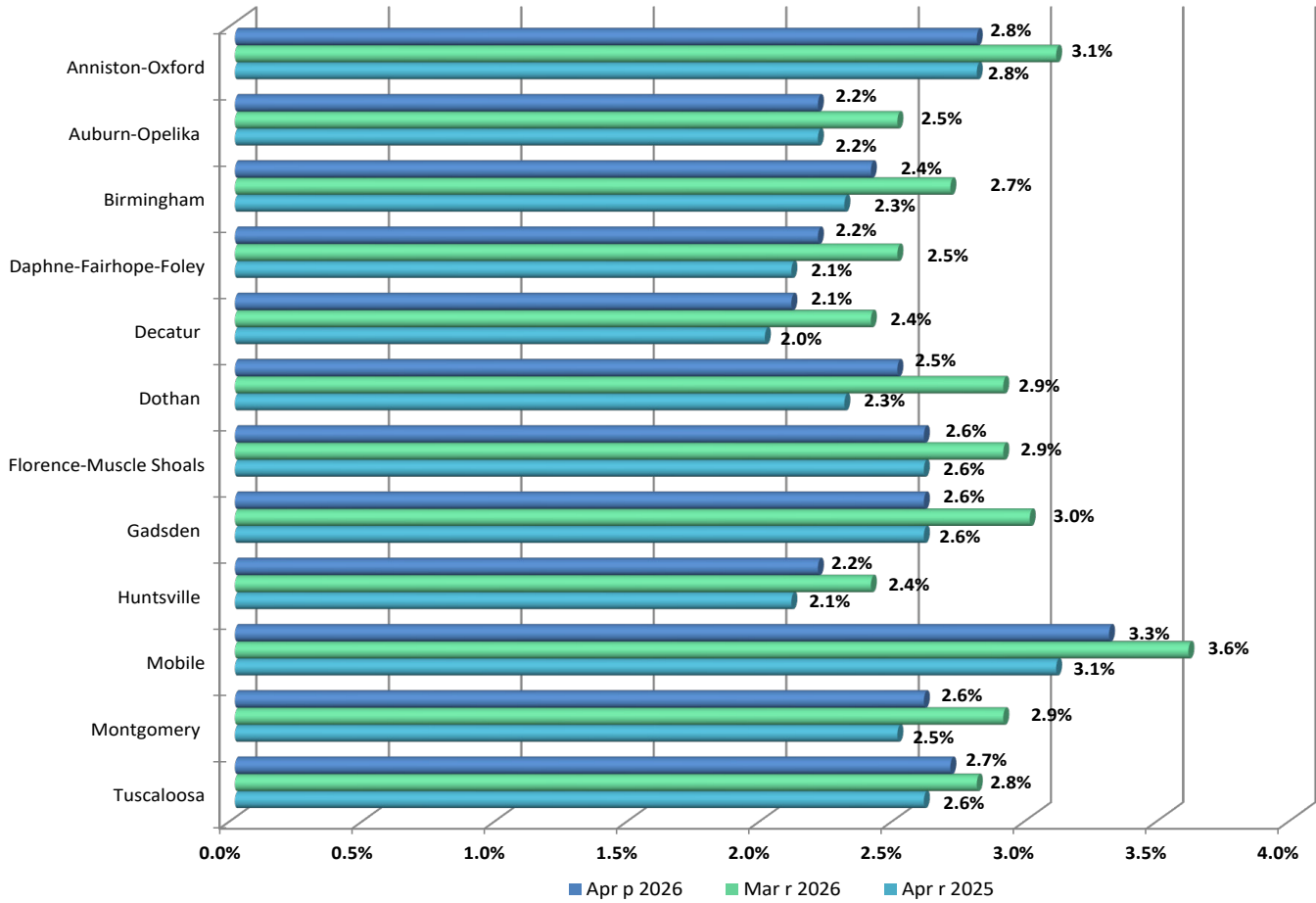

**ALABAMA, U.S., COUNTY AREA  
CIVILIAN LABOR FORCE DATA**

Area	Civilian Labor Force			Employment			Unemployment			Unemployment Rate		
	Apr p 2026	Mar r 2026	Apr r 2025	Apr p 2026	Mar r 2026	Apr r 2025	Apr p 2026	Mar r 2026	Apr r 2025	Apr p 2026	Mar r 2026	Apr r 2025
Alabama (Seasonally Adjusted)	2,378,402	2,384,074	2,377,299	2,311,287	2,318,607	2,307,708	67,115	65,467	69,591	2.8%	2.7%	2.9%
Alabama (Not Seasonally Adjusted)	2,362,611	2,377,069	2,382,783	2,302,213	2,309,594	2,324,771	60,398	67,475	58,012	2.6%	2.8%	2.4%
Autauga	28,654	28,865	28,911	28,017	28,151	28,310	637	714	601	2.2%	2.5%	2.1%
Baldwin	120,184	119,847	120,049	117,555	116,800	117,477	2,629	3,047	2,572	2.2%	2.5%	2.1%
Barbour	8,515	8,403	8,683	8,232	8,079	8,429	283	324	254	3.3%	3.9%	2.9%
Bibb	8,763	8,874	8,821	8,561	8,635	8,629	202	239	192	2.3%	2.7%	2.2%
Blount	26,865	26,926	26,903	26,313	26,285	26,356	552	641	547	2.1%	2.4%	2.0%
Bullock	4,025	4,025	4,118	3,913	3,907	3,996	112	118	122	2.8%	2.9%	3.0%
Butler	8,088	8,049	8,086	7,827	7,755	7,845	261	294	241	3.2%	3.7%	3.0%
Calhoun	49,000	49,402	49,817	47,619	47,885	48,439	1,381	1,517	1,378	2.8%	3.1%	2.8%
Chambers	18,575	18,686	18,767	18,185	18,224	18,340	390	462	427	2.1%	2.5%	2.3%
Cherokee	10,436	10,445	10,568	10,177	10,146	10,330	259	299	238	2.5%	2.9%	2.3%
Chilton	20,233	20,354	20,345	19,803	19,859	19,899	430	495	446	2.1%	2.4%	2.2%
Choctaw	4,153	4,185	4,200	3,989	3,999	4,027	164	186	173	3.9%	4.4%	4.1%
Clarke	7,974	8,050	7,942	7,630	7,663	7,616	344	387	326	4.3%	4.8%	4.1%
Clay	5,850	5,900	6,013	5,691	5,716	5,863	159	184	150	2.7%	3.1%	2.5%
Cleburne	6,553	6,584	6,516	6,406	6,415	6,379	147	169	137	2.2%	2.6%	2.1%
Coffee	23,984	23,979	24,371	23,427	23,338	23,803	557	641	568	2.3%	2.7%	2.3%
Colbert	26,074	26,296	26,352	25,381	25,489	25,639	693	807	713	2.7%	3.1%	2.7%
Conecuh	4,088	4,051	4,021	3,939	3,877	3,891	149	174	130	3.6%	4.3%	3.2%
Coosa	4,317	4,349	4,471	4,202	4,219	4,354	115	130	117	2.7%	3.0%	2.6%
Covington	15,881	15,710	15,317	15,485	15,263	14,942	396	447	375	2.5%	2.8%	2.4%
Crenshaw	5,484	5,341	5,456	5,342	5,183	5,319	142	158	137	2.6%	3.0%	2.5%
Cullman	40,320	40,313	40,091	39,407	39,275	39,236	913	1,038	855	2.3%	2.6%	2.1%
Dale	19,106	19,226	19,386	18,561	18,598	18,865	545	628	521	2.9%	3.3%	2.7%
Dallas	14,647	14,591	14,756	14,025	13,940	14,160	622	651	596	4.2%	4.5%	4.0%
DeKalb	33,093	32,962	33,015	32,366	32,097	32,323	727	865	692	2.2%	2.6%	2.1%
Elmore	42,340	42,692	42,829	41,478	41,724	41,984	862	968	845	2.0%	2.3%	2.0%
Escambia	13,153	13,189	13,193	12,707	12,701	12,804	446	488	389	3.4%	3.7%	2.9%
Etowah	41,873	42,256	42,666	40,794	41,004	41,563	1,079	1,252	1,103	2.6%	3.0%	2.6%
Fayette	6,578	6,642	6,592	6,400	6,431	6,442	178	211	150	2.7%	3.2%	2.3%
Franklin	13,874	13,941	14,014	13,567	13,584	13,708	307	357	306	2.2%	2.6%	2.2%
Geneva	11,728	11,699	11,822	11,452	11,382	11,547	276	317	275	2.4%	2.7%	2.3%
Greene	2,268	2,271	2,301	2,144	2,135	2,169	124	136	132	5.5%	6.0%	5.7%
Hale	5,696	5,621	5,629	5,472	5,370	5,427	224	251	202	3.9%	4.5%	3.6%
Henry	8,106	8,074	8,141	7,921	7,848	7,952	185	226	189	2.3%	2.8%	2.3%
Houston	48,973	49,240	49,579	47,696	47,763	48,421	1,277	1,477	1,158	2.6%	3.0%	2.3%
Jackson	20,703	20,876	20,923	20,158	20,230	20,335	545	646	588	2.6%	3.1%	2.8%
Jefferson	318,139	322,293	320,871	309,588	312,939	312,820	8,551	9,354	8,051	2.7%	2.9%	2.5%
Lamar	5,256	5,322	5,350	5,110	5,134	5,205	146	188	145	2.8%	3.5%	2.7%
Lauderdale	43,635	43,951	44,036	42,481	42,702	42,919	1,154	1,249	1,117	2.6%	2.8%	2.5%
Lawrence	16,321	16,307	16,300	15,970	15,903	15,937	351	404	353	2.2%	2.5%	2.2%
Lee	91,737	92,355	92,383	89,780	90,119	90,404	1,957	2,236	1,979	2.1%	2.4%	2.1%
Limestone	58,970	59,179	59,234	57,744	57,755	58,014	1,226	1,424	1,220	2.1%	2.4%	2.1%
Lowndes	3,782	3,683	3,709	3,618	3,515	3,544	164	168	165	4.3%	4.6%	4.4%
Macon	7,638	7,617	7,635	7,386	7,336	7,371	252	281	264	3.3%	3.7%	3.5%
Madison	225,911	227,730	227,744	220,953	222,217	223,058	4,958	5,513	4,686	2.2%	2.4%	2.1%
Marengo	7,702	7,600	7,444	7,439	7,328	7,211	263	272	233	3.4%	3.6%	3.1%
Marion	11,944	12,001	12,179	11,612	11,639	11,848	332	362	331	2.8%	3.0%	2.7%
Marshall	45,189	45,331	45,389	44,240	44,243	44,430	949	1,088	959	2.1%	2.4%	2.1%
Mobile	184,137	184,905	186,936	178,040	178,244	181,217	6,097	6,661	5,719	3.3%	3.6%	3.1%
Monroe	6,645	6,611	6,704	6,291	6,201	6,416	354	410	288	5.3%	6.2%	4.3%
Montgomery	102,751	103,597	103,861	99,732	100,348	101,017	3,019	3,249	2,844	2.9%	3.1%	2.7%
Morgan	62,102	62,257	62,158	60,806	60,770	60,943	1,296	1,487	1,215	2.1%	2.4%	2.0%
Perry	2,353	2,346	2,383	2,229	2,195	2,258	124	151	125	5.3%	6.4%	5.2%
Pickens	6,770	6,723	6,819	6,558	6,495	6,578	212	228	241	3.1%	3.4%	3.5%
Pike	15,248	15,241	15,705	14,791	14,778	15,264	457	463	441	3.0%	3.0%	2.8%
Randolph	8,623	8,655	8,660	8,381	8,388	8,425	242	267	235	2.8%	3.1%	2.7%
Russell	22,765	22,992	23,144	22,077	22,166	22,497	688	826	647	3.0%	3.6%	2.8%
Shelby	123,171	124,697	124,358	120,742	121,949	121,988	2,429	2,748	2,370	2.0%	2.2%	1.9%
St. Clair	45,667	46,222	46,005	44,629	45,092	45,114	1,038	1,130	891	2.3%	2.4%	1.9%
Sumter	4,469	4,508	4,544	4,322	4,337	4,388	147	171	156	3.3%	3.8%	3.4%
Talladega	34,429	34,845	35,269	33,377	33,694	34,313	1,052	1,151	956	3.1%	3.3%	2.7%
Tallapoosa	16,342	16,423	16,670	15,863	15,880	16,227	479	543	443	2.9%	3.3%	2.7%
Tuscaloosa	112,594	113,290	114,359	109,741	110,272	111,533	2,853	3,018	2,826	2.5%	2.7%	2.5%
Walker	27,028	27,377	27,259	26,362	26,606	26,614	666	771	645	2.5%	2.8%	2.4%
Washington	7,651	7,616	7,544	7,439	7,388	7,339	212	228	205	2.8%	3.0%	2.7%
Wilcox	3,514	3,478	3,451	3,343	3,279	3,286	171	199	165	4.9%	5.7%	4.8%
Winston	9,974	10,004	10,007	9,725	9,715	9,759	249	289	248	2.5%	2.9%	2.5%
United States (Seasonally Adjusted)	169,995,000	170,087,000	171,054,000	162,622,000	162,848,000	163,898,000	7,373,000	7,239,000	7,155,000	4.3%	4.3%	4.2%
United States (Not Seasonally Adj.)	169,548,000	170,102,000	170,650,000	162,781,000	162,764,000	164,069,000	6,768,000	7,337,000	6,582,000	4.0%	4.3%	3.9%

Counties and Metropolitan Statistical Areas are comparable to the not seasonally adjusted labor force data.



### ALABAMA METROPOLITAN STATISTICAL AREA UNEMPLOYMENT RATES



### METROPOLITAN STATISTICAL AREAS CIVILIAN LABOR FORCE DATA

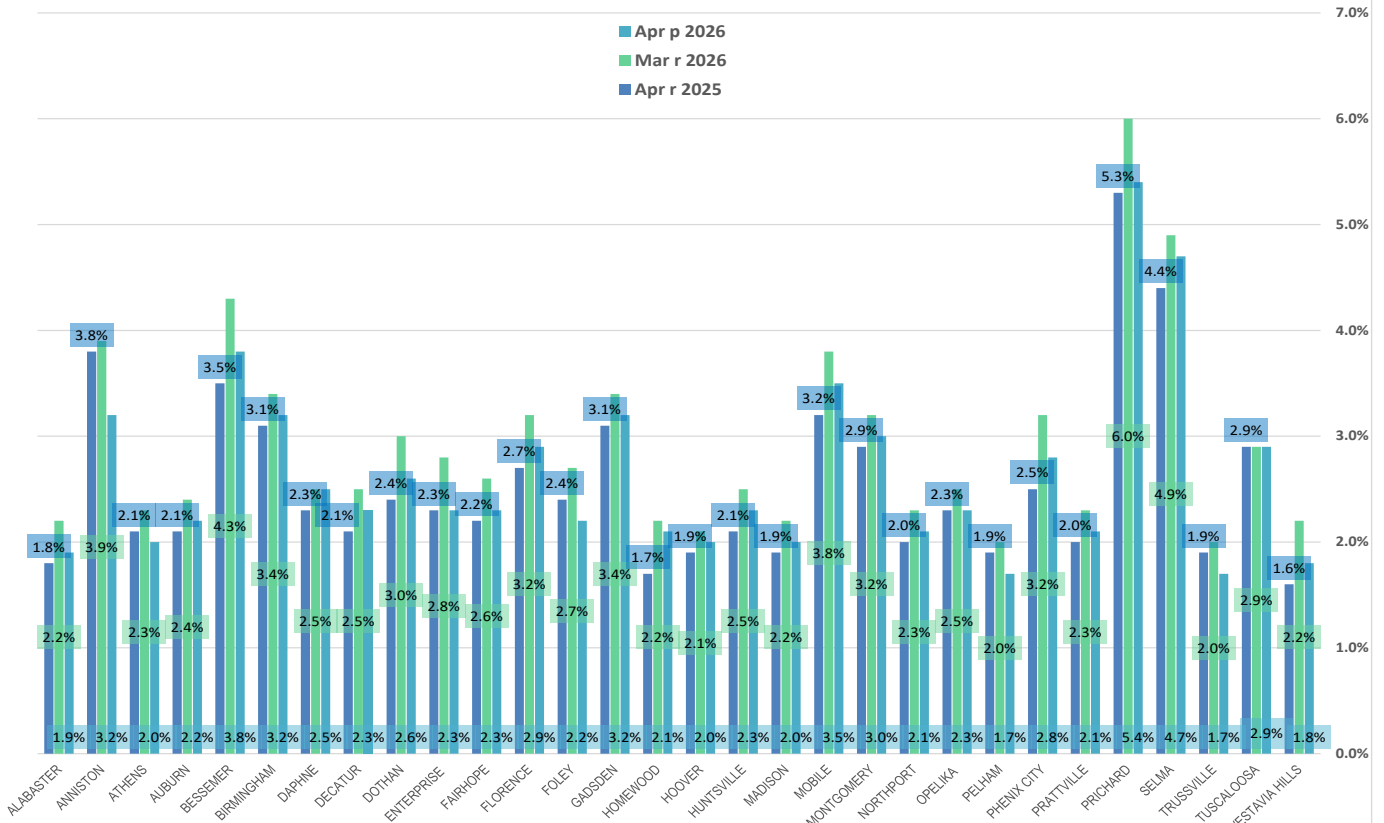
Area	Civilian Labor Force			Employment			Unemployment			Unemployment Rate		
	Apr p 2026	Mar r 2026	Apr r 2025	Apr p 2026	Mar r 2026	Apr r 2025	Apr p 2026	Mar r 2026	Apr r 2025	Apr p 2026	Mar r 2026	Apr r 2025
Anniston-Oxford MSA	49,000	49,402	49,817	47,619	47,885	48,439	1,381	1,517	1,378	2.8%	3.1%	2.8%
Auburn-Opelika MSA	99,375	99,972	100,018	97,166	97,455	97,775	2,209	2,517	2,243	2.2%	2.5%	2.2%
Birmingham MSA	569,866	576,743	574,562	555,998	561,365	561,420	13,868	15,378	13,142	2.4%	2.7%	2.3%
Daphne-Fairhope-Foley MSA	120,184	119,847	120,049	117,555	116,800	117,477	2,629	3,047	2,572	2.2%	2.5%	2.1%
Decatur MSA	78,423	78,564	78,458	76,776	76,673	76,890	1,647	1,891	1,568	2.1%	2.4%	2.0%
Dothan MSA	68,807	69,013	69,542	67,069	66,993	67,920	1,738	2,020	1,622	2.5%	2.9%	2.3%
Florence-Muscle Shoals MSA	69,709	70,247	70,388	67,862	68,191	68,558	1,847	2,056	1,830	2.6%	2.9%	2.6%
Gadsden MSA	41,873	42,256	42,666	40,794	41,004	41,563	1,079	1,252	1,103	2.6%	3.0%	2.6%
Huntsville MSA	284,881	286,909	286,978	278,697	279,972	281,072	6,184	6,937	5,906	2.2%	2.4%	2.1%
Mobile MSA	184,137	184,905	186,936	178,040	178,244	181,217	6,097	6,661	5,719	3.3%	3.6%	3.1%
Montgomery MSA	177,527	178,837	179,310	172,845	173,738	174,855	4,682	5,099	4,455	2.6%	2.9%	2.5%
Tuscaloosa MSA	127,328	127,905	129,108	123,915	124,272	125,707	3,413	3,633	3,401	2.7%	2.8%	2.6%

Counties and Metropolitan Statistical Areas are comparable to the not seasonally adjusted labor force data.

Estimates prepared by the Alabama Department of Workforce in cooperation with the Bureau of Labor Statistics, based on a 2025 benchmark.



SELECTED CITY UNEMPLOYMENT RATES



CITY AREAS CIVILIAN LABOR FORCE DATA

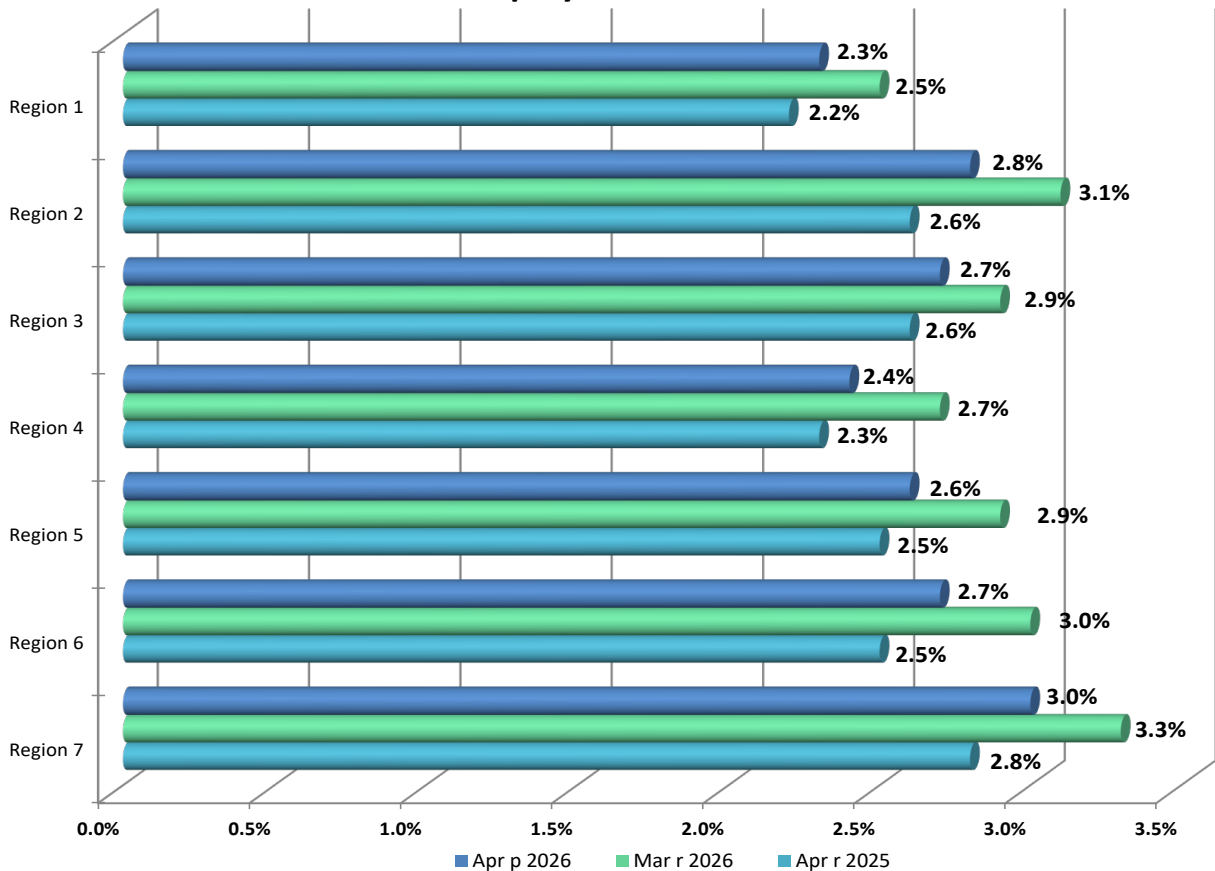
Area	Civilian Labor Force			Employment			Unemployment			Unemployment Rate		
	Apr p 2026	Mar r 2026	Apr r 2025	Apr p 2026	Mar r 2026	Apr r 2025	Apr p 2026	Mar r 2026	Apr r 2025	Apr p 2026	Mar r 2026	Apr r 2025
ALABASTER CITY	17,980	18,208	18,152	17,640	17,816	17,822	340	392	330	1.9%	2.2%	1.8%
ANNISTON CITY	8,085	8,183	8,272	7,824	7,867	7,958	261	316	314	3.2%	3.9%	3.8%
ATHENS CITY	16,148	16,204	16,243	15,822	15,825	15,896	326	379	347	2.0%	2.3%	2.1%
AUBURN CITY	40,979	41,233	41,242	40,086	40,237	40,365	893	996	877	2.2%	2.4%	2.1%
BESSEMER CITY	9,685	9,839	9,758	9,317	9,418	9,414	368	421	344	3.8%	4.3%	3.5%
BIRMINGHAM CITY	93,112	94,337	94,010	90,123	91,097	91,063	2,989	3,240	2,947	3.2%	3.4%	3.1%
DAPHNE CITY	14,769	14,684	14,735	14,405	14,313	14,396	364	371	339	2.5%	2.5%	2.3%
DECATUR CITY	28,566	28,617	28,584	27,917	27,900	27,979	649	717	605	2.3%	2.5%	2.1%
DOTHAN CITY	32,385	32,564	32,808	31,550	31,595	32,031	835	969	777	2.6%	3.0%	2.4%
ENTERPRISE CITY	12,545	12,555	12,749	12,254	12,209	12,452	291	346	297	2.3%	2.8%	2.3%
FAIRHOPE CITY	10,931	10,897	10,908	10,678	10,610	10,671	253	287	237	2.3%	2.6%	2.2%
FLORENCE CITY	18,465	18,620	18,630	17,937	18,030	18,122	528	590	508	2.9%	3.2%	2.7%
FOLEY CITY	11,561	11,545	11,575	11,301	11,229	11,294	260	316	281	2.2%	2.7%	2.4%
GADSDEN CITY	12,443	12,535	12,662	12,046	12,108	12,274	397	427	388	3.2%	3.4%	3.1%
HOMEWOOD CITY	14,645	14,812	14,739	14,336	14,491	14,485	309	321	254	2.1%	2.2%	1.7%
HOOVER CITY	49,421	50,033	49,895	48,456	48,970	48,960	965	1,063	935	2.0%	2.1%	1.9%
HUNTSVILLE CITY	123,157	124,143	124,121	120,337	121,008	121,468	2,820	3,135	2,653	2.3%	2.5%	2.1%
MADISON CITY	33,582	33,803	33,827	32,921	33,071	33,201	661	732	626	2.0%	2.2%	1.9%
MOBILE CITY	93,456	93,893	94,884	90,195	90,299	91,805	3,261	3,594	3,079	3.5%	3.8%	3.2%
MONTGOMERY CITY	88,604	89,308	89,572	85,910	86,441	87,017	2,694	2,867	2,555	3.0%	3.2%	2.9%
NORTHPORT CITY	15,540	15,651	15,775	15,219	15,292	15,467	321	359	308	2.1%	2.3%	2.0%
OPELIKA CITY	17,052	17,154	17,165	16,655	16,718	16,771	397	436	394	2.3%	2.5%	2.3%
PELHAM CITY	14,404	14,593	14,582	14,163	14,305	14,309	241	288	273	1.7%	2.0%	1.9%
PHENIX CITY	16,966	17,120	17,207	16,499	16,565	16,775	467	555	432	2.8%	3.2%	2.5%
PRATTVILLE CITY	19,553	19,693	19,743	19,139	19,232	19,340	414	461	403	2.1%	2.3%	2.0%
PRICHARD CITY	6,234	6,278	6,339	5,895	5,901	6,000	339	377	339	5.4%	6.0%	5.3%
SELMA CITY	6,520	6,492	6,562	6,213	6,175	6,272	307	317	290	4.7%	4.9%	4.4%
TRUSSVILLE CITY	13,825	14,011	13,990	13,586	13,732	13,728	239	279	262	1.7%	2.0%	1.9%
TUSCALOOSA CITY	51,147	51,396	51,952	49,645	49,885	50,456	1,502	1,511	1,496	2.9%	2.9%	2.9%
VESTAVIA HILLS CITY	18,437	18,699	18,588	18,097	18,293	18,286	340	406	302	1.8%	2.2%	1.6%

City Areas are comparable to the not seasonally adjusted labor force data.

Estimates prepared by the Alabama Department of Workforce in cooperation with the Bureau of Labor Statistics, based on a 2025 benchmark.



### Alabama Workforce Regions Unemployment Rates



### WORKFORCE REGIONS CIVILIAN LABOR FORCE DATA

Area	Civilian Labor Force			Employment			Unemployment			Unemployment Rate		
	Apr p 2026	Mar r 2026	Apr r 2025	Apr p 2026	Mar r 2026	Apr r 2025	Apr p 2026	Mar r 2026	Apr r 2025	Apr p 2026	Mar r 2026	Apr r 2025
Region 1	608,110	611,148	611,442	594,410	595,619	598,159	13,700	15,529	13,283	2.3%	2.5%	2.2%
Region 2	156,764	158,087	159,509	152,445	153,248	155,312	4,319	4,839	4,197	2.8%	3.1%	2.6%
Region 3	160,096	160,851	161,859	155,747	156,137	157,582	4,349	4,714	4,277	2.7%	2.9%	2.6%
Region 4	561,103	567,869	565,741	547,437	552,730	552,791	13,666	15,139	12,950	2.4%	2.7%	2.3%
Region 5	359,926	362,221	363,637	350,505	351,724	354,462	9,421	10,497	9,175	2.6%	2.9%	2.5%
Region 6	165,113	164,962	166,546	160,734	159,987	162,387	4,379	4,975	4,159	2.7%	3.0%	2.5%
Region 7	351,499	351,932	354,040	340,933	340,152	344,073	10,566	11,780	9,967	3.0%	3.3%	2.8%

Areas are comparable to the not seasonally adjusted labor force data.

Estimates prepared by the Alabama Department of Workforce in cooperation with the Bureau of Labor Statistics, based on a 2025 benchmark.

For information about the Workforce Region geography, please visit <http://workforce.alabama.gov/Information/WorkforceRegionsMap.pdf>.



## Alabama Counties Ranked in Descending Order Unemployment Rates

Current April 2026

2025 Annual Average

Rank	Area	Rate
1	Greene County, AL	5.5%
2	Monroe County, AL	5.3%
2	Perry County, AL	5.3%
4	Wilcox County, AL	4.9%
5	Clarke County, AL	4.3%
5	Lowndes County, AL	4.3%
7	Dallas County, AL	4.2%
8	Choctaw County, AL	3.9%
8	Hale County, AL	3.9%
10	Conecuh County, AL	3.6%
11	Escambia County, AL	3.4%
11	Marengo County, AL	3.4%
13	Barbour County, AL	3.3%
13	Macon County, AL	3.3%
13	Mobile County, AL	3.3%
13	Sumter County, AL	3.3%
17	Butler County, AL	3.2%
18	Pickens County, AL	3.1%
18	Talladega County, AL	3.1%
20	Pike County, AL	3.0%
20	Russell County, AL	3.0%
22	Dale County, AL	2.9%
22	Montgomery County, AL	2.9%
22	Tallapoosa County, AL	2.9%
25	Bullock County, AL	2.8%
25	Calhoun County, AL	2.8%
25	Lamar County, AL	2.8%
25	Marion County, AL	2.8%
25	Randolph County, AL	2.8%
25	Washington County, AL	2.8%
31	Clay County, AL	2.7%
31	Colbert County, AL	2.7%
31	Coosa County, AL	2.7%
31	Fayette County, AL	2.7%
31	Jefferson County, AL	2.7%
36	Crenshaw County, AL	2.6%
36	Etowah County, AL	2.6%
36	Houston County, AL	2.6%
36	Jackson County, AL	2.6%
36	Lauderdale County, AL	2.6%
41	Cherokee County, AL	2.5%
41	Covington County, AL	2.5%
41	Tuscaloosa County, AL	2.5%
41	Walker County, AL	2.5%
41	Winston County, AL	2.5%
46	Geneva County, AL	2.4%
47	Bibb County, AL	2.3%
47	Coffee County, AL	2.3%
47	Cullman County, AL	2.3%
47	Henry County, AL	2.3%
47	St. Clair County, AL	2.3%
52	Autauga County, AL	2.2%
52	Baldwin County, AL	2.2%
52	Cleburne County, AL	2.2%
52	DeKalb County, AL	2.2%
52	Franklin County, AL	2.2%
52	Lawrence County, AL	2.2%
52	Madison County, AL	2.2%
59	Blount County, AL	2.1%
59	Chambers County, AL	2.1%
59	Chilton County, AL	2.1%
59	Lee County, AL	2.1%
59	Limestone County, AL	2.1%
59	Marshall County, AL	2.1%
59	Morgan County, AL	2.1%
66	Elmore County, AL	2.0%
66	Shelby County, AL	2.0%

Rank	Area	Rate
1	Greene County, AL	6.5%
2	Perry County, AL	6.1%
3	Wilcox County, AL	5.6%
4	Monroe County, AL	5.2%
5	Clarke County, AL	4.9%
5	Lowndes County, AL	4.9%
7	Dallas County, AL	4.6%
8	Choctaw County, AL	4.2%
8	Hale County, AL	4.2%
8	Sumter County, AL	4.2%
11	Conecuh County, AL	4.1%
12	Macon County, AL	4.0%
13	Pickens County, AL	3.9%
14	Marengo County, AL	3.7%
15	Barbour County, AL	3.6%
16	Butler County, AL	3.5%
16	Escambia County, AL	3.5%
16	Mobile County, AL	3.5%
19	Bullock County, AL	3.4%
19	Randolph County, AL	3.4%
19	Russell County, AL	3.4%
22	Jackson County, AL	3.3%
23	Calhoun County, AL	3.2%
23	Colbert County, AL	3.2%
23	Dale County, AL	3.2%
23	Lamar County, AL	3.2%
23	Pike County, AL	3.2%
23	Talladega County, AL	3.2%
23	Washington County, AL	3.2%
30	Lauderdale County, AL	3.1%
30	Marion County, AL	3.1%
30	Montgomery County, AL	3.1%
30	Tallapoosa County, AL	3.1%
34	Coosa County, AL	3.0%
34	Crenshaw County, AL	3.0%
34	Etowah County, AL	3.0%
34	Tuscaloosa County, AL	3.0%
34	Winston County, AL	3.0%
39	Covington County, AL	2.9%
39	Jefferson County, AL	2.9%
41	Cherokee County, AL	2.8%
41	Clay County, AL	2.8%
41	Fayette County, AL	2.8%
41	Henry County, AL	2.8%
41	Houston County, AL	2.8%
41	Walker County, AL	2.8%
47	Bibb County, AL	2.7%
47	Coffee County, AL	2.7%
47	Franklin County, AL	2.7%
47	Geneva County, AL	2.7%
51	Chambers County, AL	2.6%
51	Chilton County, AL	2.6%
51	Cleburne County, AL	2.6%
54	Baldwin County, AL	2.5%
54	Cullman County, AL	2.5%
54	DeKalb County, AL	2.5%
54	Lawrence County, AL	2.5%
54	Lee County, AL	2.5%
59	Autauga County, AL	2.4%
59	Blount County, AL	2.4%
59	Limestone County, AL	2.4%
59	Madison County, AL	2.4%
59	Marshall County, AL	2.4%
64	Elmore County, AL	2.3%
64	Morgan County, AL	2.3%
64	St. Clair County, AL	2.3%
67	Shelby County, AL	2.2%

Estimates prepared by the Alabama Department of Workforce in Cooperation with the Bureau of Labor Statistics, based on 2025 benchmark.



## Local Area Unemployment Statistics (LAUS) & Current Employment Statistics (CES)

### 2026 Publication Schedule

Reference Month	Publication Date
<b>January</b> <i>Southeastern States Map available (Wed.), 4/8/2026</i>	(Tues.) 4/7/2026, 8:00AM
<b>February</b> <i>Southeastern States Map available (Wed.), 4/22/2026</i>	(Fri.) 4/17/2026, 8:00AM
<b>March</b> <i>Southeastern States Map available (Wed.), 5/6/2026</i>	(Fri.) 5/1/2026, 8:00AM
<b>April</b>	(Fri.) 5/22/2026, 8:00AM
<b>May</b> <i>Southeastern States Map available (Tues.), 6/23/2026</i>	(Mon.) 6/22/2026, 8:00AM
<b>June</b> <i>Southeastern States Map available (Tues.), 7/21/2026</i>	(Fri.) 7/17/2026, 8:00AM
<b>July</b>	(Fri.) 8/21/2026, 8:00AM
<b>August</b>	(Fri.) 9/18/2026, 8:00AM
<b>September</b> <i>Southeastern States Map available (Tues.), 10/20/2026</i>	(Fri.) 10/16/2026, 8:00AM
<b>October</b>	(Fri.) 11/20/2026, 8:00AM
<b>November</b>	(Fri.) 12/18/2026, 8:00AM
<b>December</b> <i>Southeastern States Map available (Tues.), 1/26/2027</i>	(Fri.) 1/22/2027, 8:00AM



[workforce.alabama.gov/lmi](https://workforce.alabama.gov/lmi)

### Local Area Unemployment Statistics

Labor Market Information Division  
Alabama Department of Workforce  
50 Ripley St, Room 4403  
Montgomery, AL 36131-2280

Phone/Fax: 334-956-7485